

CRIME & CRASHES

Crime Rates

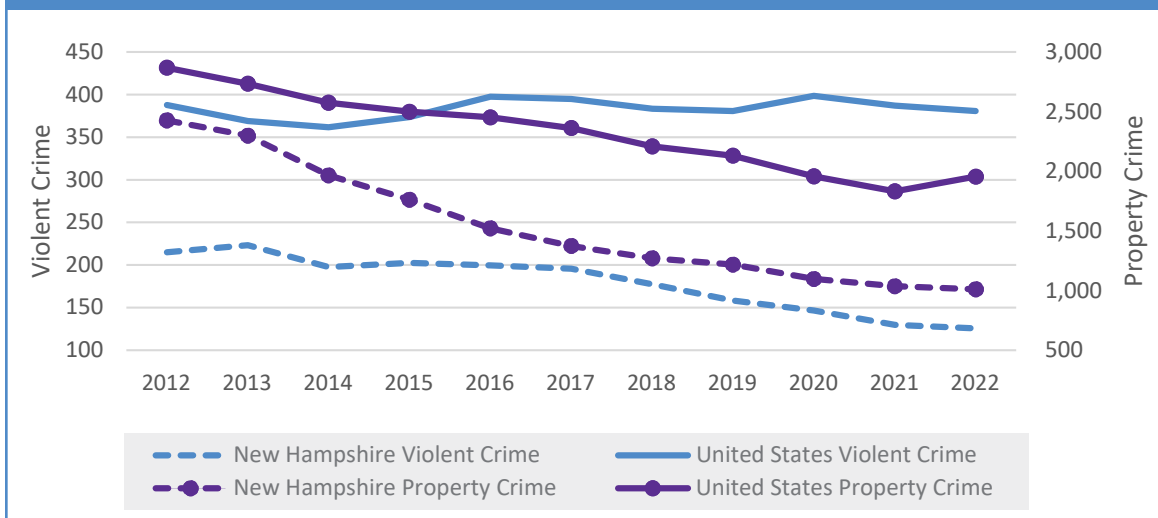
The U.S. violent crime rate increased slightly in 2020, before declining again in 2021 and 2022. This included a 33 percent increase in the homicide rate from 2019 to 2020, as well as a 12 percent increase in aggravated assault. The homicide rate increased again in 2021, before declining in 2022. Homicide rates over this three-year period were at their highest levels since the late 1990s. Fortunately, initial evidence suggests the decline in homicides appeared to accelerate in 2023. While the FBI's official statistics are not yet available, an analysis of crime data from the largest 200 U.S. cities found murders in those cities declined 12 percent in 2023.¹

Unlike the U.S. overall, New Hampshire did not experience an increase in the homicide rate in 2020 and 2021. The 2019 homicide rate was actually New Hampshire's highest since 1991, 2.4 homicides per 100,000 residents, although this was less than half of the national rate that year (5.1 homicides per 100,000 residents). After declining to 0.9

homicides per 100,000 residents in 2020 and 2021, New Hampshire's homicide rate increased to 1.8 homicides per 100,000 residents in 2022. Aside from 2019, this was the highest homicide rate in more than 20 years. While homicides increased in 2022, New Hampshire's total violent crime rate did not, and has declined every year since 2016. New Hampshire's 2022 violent crime rate, 125.6 violent crimes per 100,000 residents was approximately one-third of the national rate.

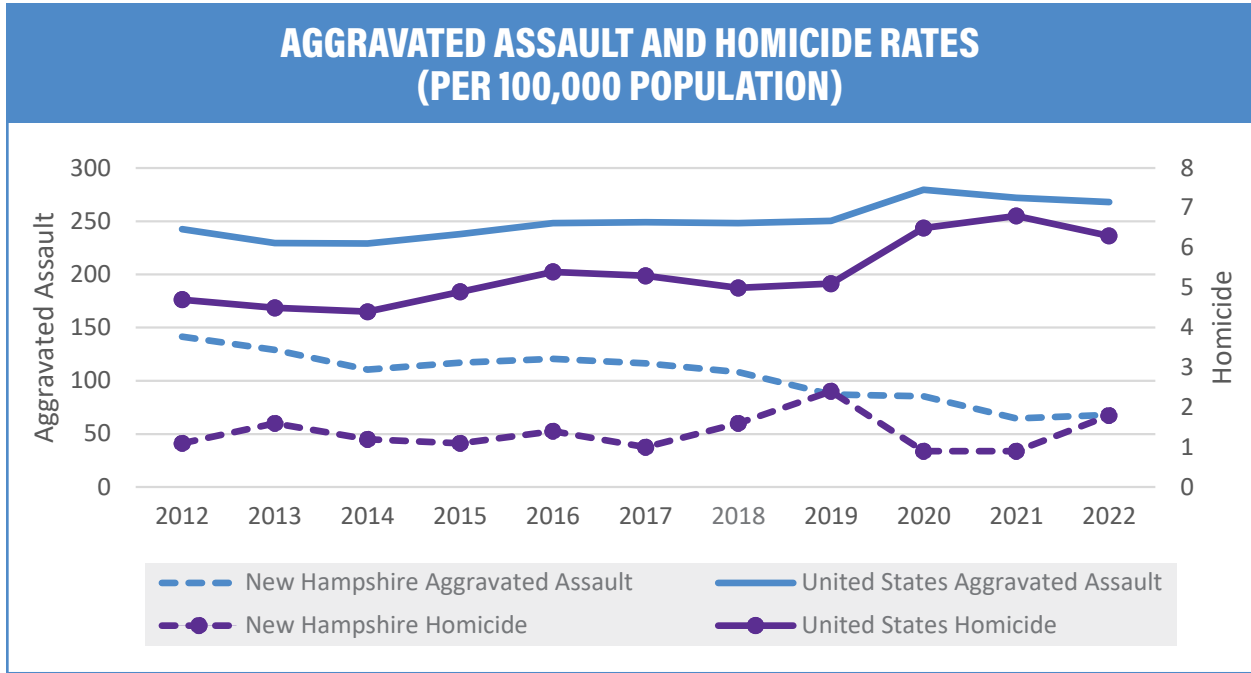
The U.S. property crime rate increased slightly in 2022, ending 20 years of falling rates. A seven percent increase in larceny was the largest contributor to this increase. While less prevalent than larcenies, motor vehicle thefts increased three years in a row, rising 28 percent over 2019 rates. New Hampshire's property crime rate declined in 2022 and has declined every year since 2012. Motor vehicle thefts increased slightly in 2019 and 2020, before falling in 2021 and 2022, while larcenies and burglaries decreased.

CRIME RATES IN NEW HAMPSHIRE AND THE U.S. (PER 100,000 POPULATION)

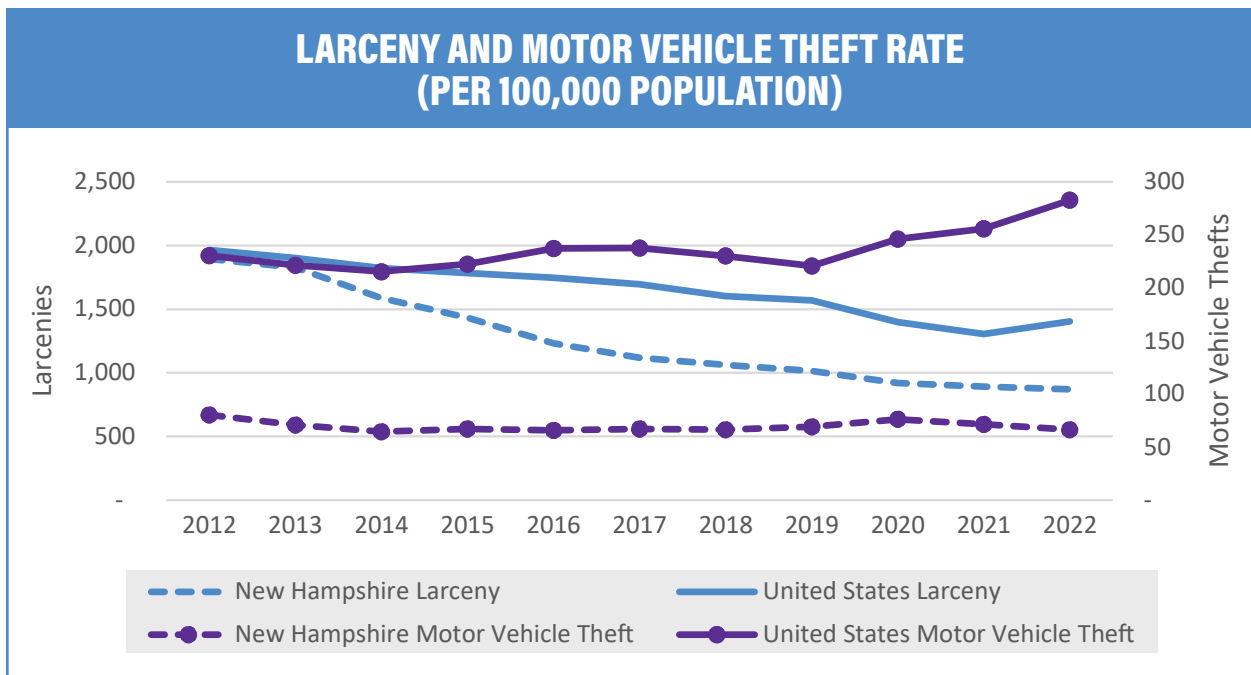


Source: Federal Bureau of Investigation, Crime Data Explorer

¹ Karen Zamora, Ari Shapiro, Courtney Dorning, "Violent crime is dropping fast in the U.S. — even if Americans don't believe it," NPR, February 12, 2024. <https://www.npr.org/2024/02/12/1229891045/police-crime-baltimore-san-francisco-minneapolis-murder-statistics>.



Source: Federal Bureau of Investigation, Crime Data Explorer



Source: Federal Bureau of Investigation, Crime Data Explorer

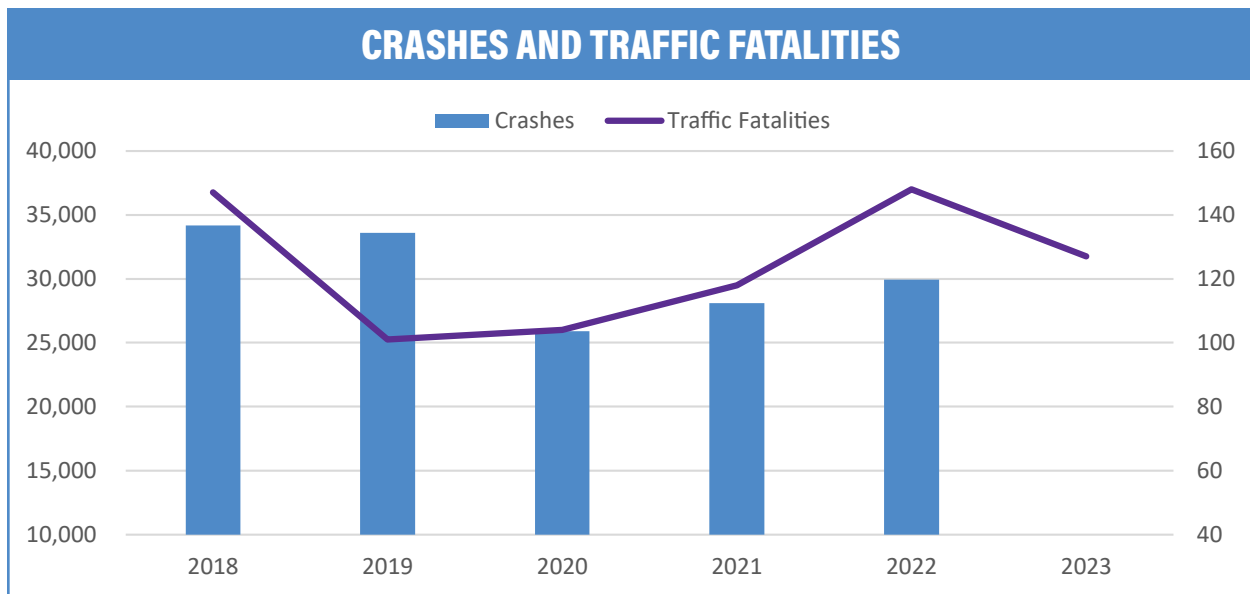
Traffic Fatalities

Traffic fatalities in New Hampshire increased from 101 in 2019 to 148 in 2022, a 47 percent increase. This occurred despite a decrease in total crashes, which declined 11 percent. Fatalities declined slightly in 2023, to 127 (as of December 27th), but remained slightly above the five-year average of 120 fatalities.

Nationwide, fatalities increased 18 percent between 2019 and 2021, before declining 0.3 percent in 2022. Only two states, Vermont and Connecticut, experienced a larger increase in traffic fatalities than New Hampshire over that three-year period. Data from the National Highway Traffic Safety

Administration indicate speeding, careless driving, and drug and alcohol use were the primary factors contributing to the increase in fatal accidents. In 2022, two-thirds of fatal New Hampshire crashes involved drugs or alcohol.² Nationwide, many law enforcement agencies have struggled with adequate staffing levels, particularly since the murder of George Floyd by law enforcement officers in May 2020. Some agencies have cut back on traffic violation enforcement to focus on other priorities, which has likely contributed to increased rates of careless driving.³

– Greg David



Source: New Hampshire Department of Safety

2 Imani Fleming, "Data shows decline in deadly crashes in New Hampshire in 2023" WMUR, December 30, 2023. <https://www.wmur.com/article/decline-deadly-crashes-in-new-hampshire-2023/46256330>.

3 Tim Henderson, "Less Driving but More Deaths: Spike in Traffic Fatalities Puzzles Lawmakers," New Hampshire Bulletin, November 14, 2023. <https://newhampshirebulletin.com/2023/11/14/less-driving-but-more-deaths-spike-in-traffic-fatalities-puzzles-lawmakers/>.

CRIME OFFENSES	2018	2019	2020	2021	2022
Total crime offenses	19,336	18,266	16,782	16,411	15,904
Annual percent change	-7.9%	-5.5%	-8.1%	-2.2%	-3.1%
Violent crime offenses	2,361	2,064	1,938	1,801	1,737
Annual percent change	-9.7%	-12.6%	-6.1%	-7.1%	-3.6%
Property crime offenses	16,975	16,202	14,844	14,610	14,167
Annual percent change	-7.7%	-4.6%	-8.4%	-1.6%	-3.0%

Total Crime Index (Rate per 100,000 population)					
United States	2,593.2	2,511.4	2,356.7	2,219.3	2,335.1
New Hampshire	1,448.5	1,374.5	1,245.3	1,165.2	1,136.5
Connecticut	1,871.5	1,616.9	1,746.7	1,687.0	1,644.0
Maine	1,471.2	1,363.8	1,264.8	1,247.1	1,316.8
Massachusetts	1,613.9	1,509.3	1,362.0	1,301.4	1,392.1
Rhode Island	1,885.2	1,764.2	1,476.3	1,428.8	1,457.6
Vermont	1,500.1	1,644.3	1,390.4	1,577.8	1,893.0

Violent Crime Index (Rate per 100,000 population)					
United States	383.4	380.8	398.5	387.0	380.7
New Hampshire	177.6	158.1	146.4	127.7	125.6
Connecticut	209.6	184.6	181.6	168.6	150.0
Maine	112.0	116.1	108.6	112.9	103.3
Massachusetts	340.3	328.7	308.8	301.1	322.0
Rhode Island	219.8	222.7	230.8	200.5	172.3
Vermont	185.0	207.2	173.4	194.0	221.9

Property Crime Index (Rate per 100,000 population)					
United States	2,209.8	2,130.6	1,958.2	1,832.3	1,954.4
New Hampshire	1,270.9	1,216.4	1,098.9	1,037.5	1,010.9
Connecticut	1,661.9	1,432.3	1,565.1	1,518.4	1,494.0
Maine	1,359.2	1,247.7	1,156.2	1,134.2	1,213.5
Massachusetts	1,273.6	1,180.6	1,053.2	1,000.3	1,070.1
Rhode Island	1,665.4	1,541.5	1,245.5	1,228.3	1,285.3
Vermont	1,315.1	1,437.1	1,217.0	1,383.8	1,671.1

Source: Federal Bureau of Investigation, ELMI Analysis. Last Update 10/20/2023

AUTO INSURANCE CLAIMS LOSS - PERSONAL AND COMMERCIAL	2018	2019	2020	2021	2022
Total Claims (\$ millions)	\$593.9	\$620.3	\$499.9	\$589.6	\$754.3
Annual percent change	-0.2%	4.4%	-19.4%	17.9%	27.9%
Personal Claims (\$ millions)	\$518.4	\$534.0	\$430.2	\$528.0	\$661.6
Annual percent change	2.5%	3.0%	-19.4%	22.7%	25.3%
Percent Personal	87.3%	86.1%	86.1%	89.6%	87.7%
Commercial Claims (\$ millions)	\$75.6	\$86.3	\$69.7	\$61.6	\$92.7
Annual percent change	-15.5%	14.2%	-19.2%	-11.6%	50.5%

Source: New Hampshire Insurance Department. Last Update 10/24/2023

CRIMINAL ARRESTS	2018	2019	2020	2021	2022
Total Arrests	47,840	46,858	37,390	39,426	36,488
Annual percent change	-3.4%	-2.1%	-20.2%	5.4%	-7.5%
Total Drug Abuse Violations	6,645	5,907	4,596	4,256	3,314
Annual percent change	-16.6%	-11.1%	-22.2%	-7.4%	-22.1%
Total DUI Offenses	5,102	5,349	4,089	4,065	3,567
Annual percent change	4.4%	4.8%	-23.6%	-0.6%	-12.3%
Juvenile Total	47,840	46,858	37,390	39,426	36,488
Annual percent change	-3.4%	-2.1%	-20.2%	5.4%	-7.5%
Total Drug Abuse Violations	6,645	5,907	4,596	4,256	3,314
Annual percent change	-16.6%	-11.1%	-22.2%	-7.4%	-22.1%
Total DUI Offenses	5,102	5,349	4,089	4,065	3,567
Annual percent change	4.4%	4.8%	-23.6%	-0.6%	-12.3%

Source: Federal Bureau of Investigation, ELMi Analysis. Last Update 10/20/2023

STATE PRISON POPULATION	2018	2019	2020	2021	2022
Number of sentenced prisoners in state and federal prisons ^a	2,745	2,691	2,352	2,127	2,086
New Hampshire's incarceration rate	202	197	170	153	149
Number of sentenced male prisoners	2,519	2,463	2,168	1,979	1,932
Number of sentenced female prisoners	226	228	184	148	154
Sentenced prisoners admitted	1,309	1,292	884	863	870
Sentenced prisoners released	1,335	1,339	1,246	1,088	916
Adults on Probation	3,916	3,659	2,723	3,720	
Adults on Parole	2,367	2,251	1,882	2,130	
U.S. incarceration rate (federal and state jurisdiction)	431	419	357	350	355
State jurisdiction incarceration rate	381	371	315	307	311
Federal jurisdiction incarceration rate	50	48	43	43	44

^a Sentenced prisoners are the number of inmates on December 31st sentenced for more than one year.

Source: U.S. Bureau of Justice Statistics. Last Update 1/18/2024

TRAFFIC CRASHES	2018	2019	2020	2021	2022
Total crashes reported ^b	34,174	33,592	25,895	28,092	29,925
Annual percent change	-6.8%	-1.7%	-22.9%	8.5%	6.5%
Seat belt use	76.4%	70.7%	72.4%	75.5%	
Fatal motor vehicle crashes	134	90	98	106	
Fatal motor crashes as a share of total	0.39%	0.27%	0.38%	0.38%	
Number of fatalities	147	101	104	118	
Number of alcohol-impaired driving fatalities ^c	48	37	75	39	
Percent of alcohol-impaired driving fatalities ^c	33%	37%	72%	33%	
Fatalities per 100 million vehicle miles	1.07	0.73	0.87	0.90	

^b Reported crashes and injuries involving \$1,000 or more in property or injury damages.

^c Based on a highest driver Blood Alcohol Concentration (BAC) of 0.8 g/dL (grams per deciliter) or higher.

Source: NH Department of Safety, National Highway Traffic Safety Administration. Last Update 2/29/2024

Prepared by: New Hampshire Employment Security, Economic and Labor Market Information Bureau

www.nhes.nh.gov/elmi | (603) 228-4124